

ROADX

Passenger & Light Truck Tires Catalogue





SUMMER SERIES

Passenger tires

RXMOTION

H11	P6	HP
H12	P8	HP
U11	P10	UHP
U11 RFT / H12 RFT	P14	RUN-FLAT
4S	P16	ALL-WEATHER

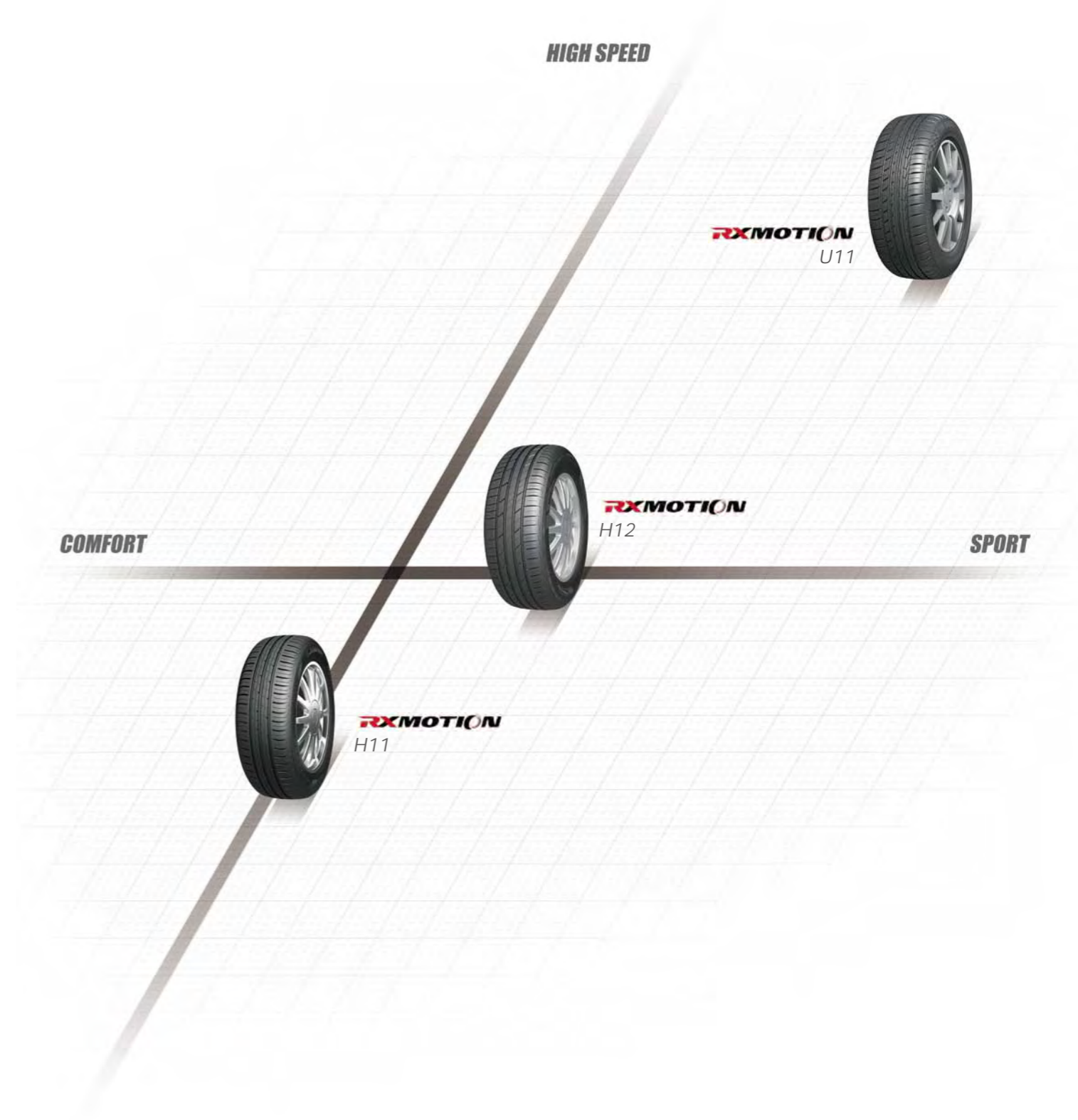
RXREQUEST

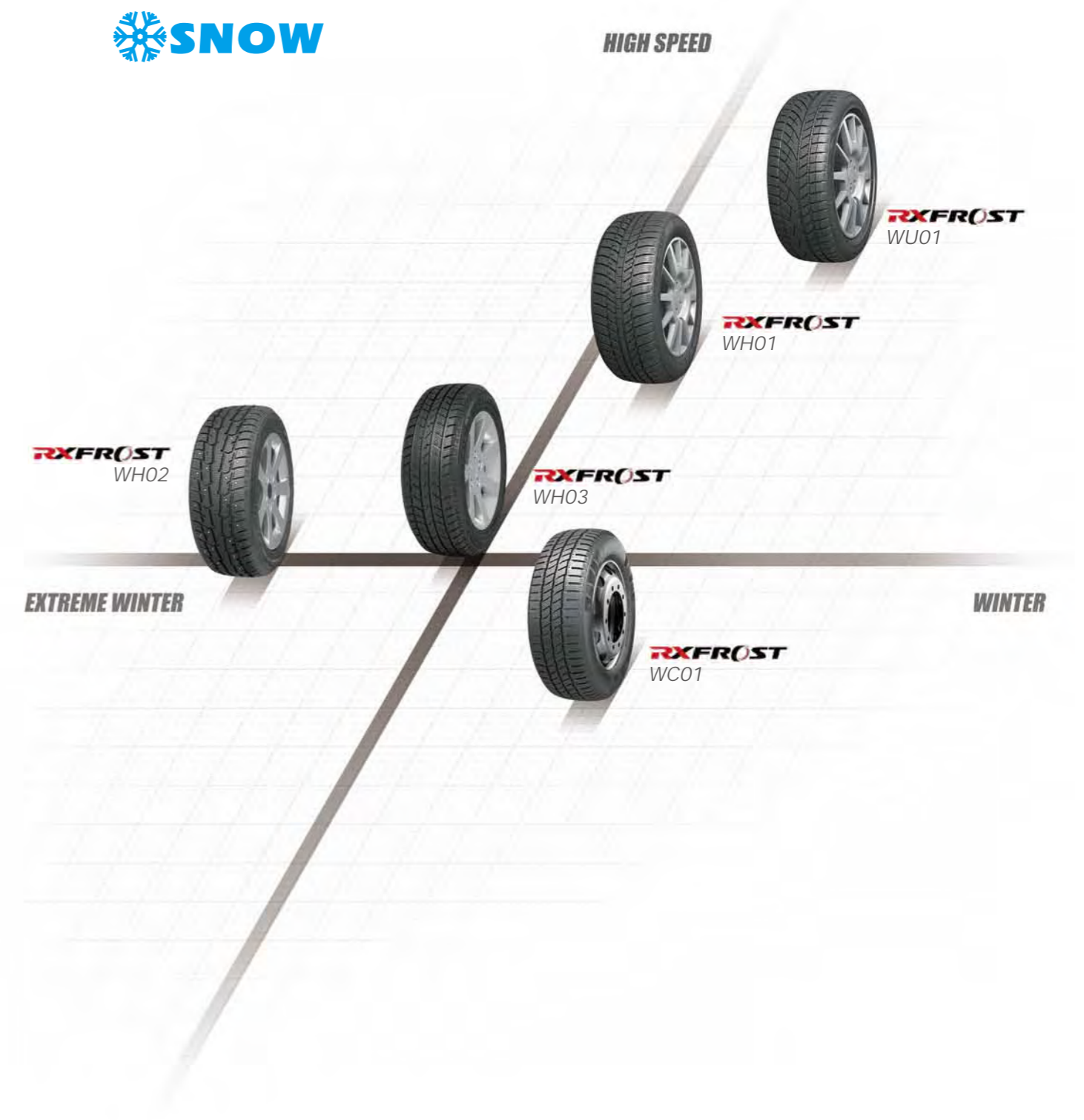
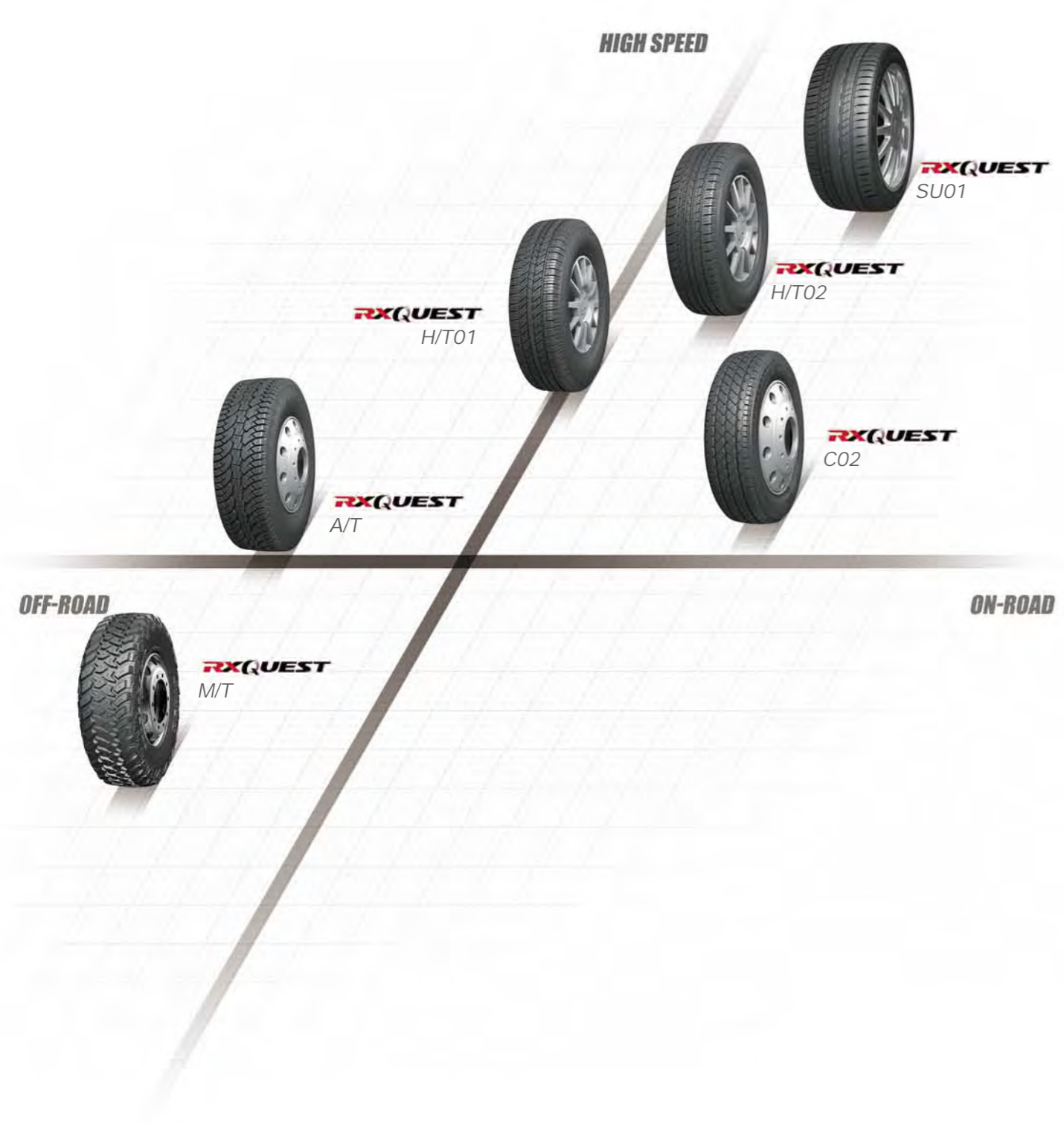
SU01	P18	SUV-UHP
SU01 RFT	P14	SUV-RUNFLAT
H/T01	P20	SUV-HT
H/T02	P22	SUV-HT
A/T	P24	SUV-AT
M/T	P26	SUV-MT
C02	P28	VAN

RXFROST

WH01	P32	WINTER-HP
WU01	P34	WINTER-UHP
WH02	P36	WINTER-HP-STUDDABLE
WH03	P38	WINTER-HP-STUDLESS
WC01	P40	WINTER-LTC

PRODUCT POSITIONING



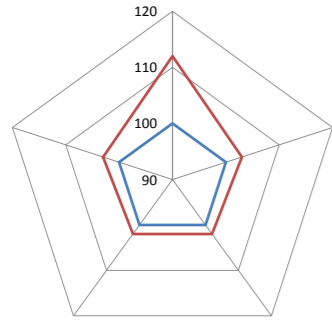


H11

SUMMER-HP



The specially formulated compounds are **ECO FRIENDLY**, highly fuel efficient and long lasting.



HP H11 (Red line) vs EXISTING PRODUCT (Blue line)



■ **Shoulder Designed**
The closed shoulder design strengthens shoulder blocks for superior handling performance.



■ **Wet Performance**
The three wide tread grooves and wave-like sipes efficiently drain water to improve grip on wet roads and improve driving safety.

■ **Handling**
A pair of center ribs and the solid shoulder blocks maintain stable contact with the road to ensure great handling.

Rim	Size	LI	SR	XL	Tread Depth	Standard RIM	Section Width	Overall Diameter	Pressure	SW	Labeling	Rim Protection
					mm	inch	mm	mm	kPa			
13	155/65R13	73	T		7.3	4.50B	157	532	300	BSW	E B 70 2	NO
	165/65R13	77	T		7.2	5.00B	170	544	300	BSW	E B 70 2	NO
	155/70R13	75	T		7	4.50B	157	548	300	BSW	E B 70 2	NO
	165/70R13	79	T		7.2	5.00B	170	562	300	BSW	E B 70 2	NO
	165/70R13	83	T	XL	7.2	5.00B	170	562	340	BSW	E B 70 2	NO
	175/70R13	82	T		7.2	5.00B	177	576	300	BSW	E B 70 2	NO
	185/70R13	86	T		7.4	5.50B	189	590	300	BSW	E B 70 2	NO
	145/80R13	75	T		7	4.00B	145	562	300	BSW	E B 70 2	NO
	155/80R13	79	T		7	4.50B	157	578	300	BSW	TBD	NO
	165/80R13	83	T		7.2	4.50B	165	594	300	BSW	E B 70 2	NO
14	165/60R14	75	H		7.2	5J	170	554	300	BSW	E B 70 2	NO
	185/60R14	82	H		7.4	5 1/2J	189	578	300	BSW	E B 70 2	NO
	195/60R14	86	H		8	6J	201	590	300	BSW	E B 70 2	NO
	155/65R14	75	T		7	4 1/2J	157	558	300	BSW	E B 70 2	NO
	165/65R14	79	T		7.2	5J	170	570	300	BSW	E B 70 2	NO
	175/65R14	86	T	XL	7.2	5J	177	584	340	BSW	E B 70 2	NO
	175/65R14	82	T		7.2	5J	177	584	300	BSW	E B 70 2	NO
	185/65R14	86	H		7.4	5 1/2J	189	596	300	BSW	E B 70 2	NO
	195/65R14	89	H		7.4	6J	201	610	300	BSW	E B 70 2	NO
	165/70R14	85	T	XL	7.2	5J	170	588	340	BSW	E B 70 2	NO
	165/70R14	81	T		7.2	5J	170	588	300	BSW	E B 70 2	NO
	175/70R14	88	T	XL	7.2	5J	177	602	340	BSW	E B 70 2	NO
	175/70R14	84	T		7.2	5J	177	602	300	BSW	E B 70 2	NO
	185/70R14	88	T		7.4	5 1/2J	189	616	300	BSW	E B 70 2	NO
	185/70R14	88	H		7.4	5 1/2J	189	616	300	BSW	E B 70 2	NO
	195/70R14	91	T		7.4	6J	201	630	300	BSW	E B 70 2	NO
165/80R14	85	T		7.2	4 1/2J	165	620	300	BSW	E B 70 2	NO	

1inch=25.4mm | 1kPa=0.142psi | 1KG=2.2 lbs | XL Extra Load | LI Load Index | SS Speed Symbol

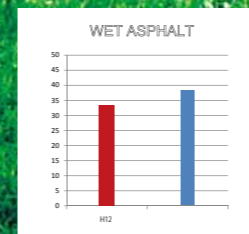
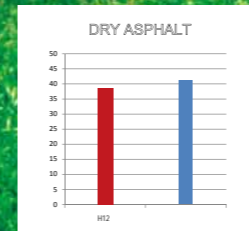


Rim	Size	LI	SR	XL	Tread Depth	Standard RIM	Section Width	Overall Diameter	Pressure	SW	Labeling	Rim Protection
					mm	inch	mm	mm	kPa			
14	185/55R14	80	V		7.4	6J	194	560	300	BSW	E B 70 2	YES
	205/70R14	98	T	XL	7.7	6J	209	644	340	BSW	C B 71 2	NO
	195/45R15	78	W		7.4	6 1/2J	195	557	300	BSW	E B 71 2	YES
	195/50R15	82	V		7.4	6J	201	577	300	BSW	E B 71 2	YES
	205/50R15	89	V	XL	7.7	6 1/2J	214	587	340	BSW	E B 71 2	YES
	175/55R15	77	H		7.6	5 1/2J	182	573	300	BSW	E B 70 2	YES
	185/55R15	82	V		7.4	6J	194	585	300	BSW	E B 70 2	YES
	195/55R15	85	V		7.4	6J	201	595	300	BSW	E B 71 2	YES
	185/60R15	88	H	XL	7.4	5 1/2J	189	603	340	BSW	E B 71 2	NO
	185/60R15	84	H		7.4	5 1/2J	189	603	300	BSW	E B 70 2	NO
15	195/60R15	88	H		7.4	6J	201	615	300	BSW	C B 71 2	NO
	195/60R15	88	V		7.4	6J	201	615	300	BSW	C B 71 2	NO
	205/60R15	95	V	XL	7.7	6J	209	627	340	BSW	C B 71 2	NO
	215/60R15	98	V	XL	7.7	6 1/2J	221	639	340	BSW	C B 71 2	NO
	225/60R15	96	V		7.7	6 1/2J	228	651	300	BSW	C B 71 2	NO
	165/65R15	81	H		7.2	5J	170	595	300	BSW	E B 70 2	NO
	175/65R15	88	H	XL	7.2	5J	177	609	340	BSW	E B 71 2	NO
	175/65R15	84	H		7.2	5J	177	609	300	BSW	E B 70 2	NO
	185/65R15	92	H	XL	7.4	5 1/2J	189	621	340	BSW	C B 71 2	NO
	185/65R15	88	H		7.4	5 1/2J	189	621	300	BSW	E B 70 2	NO
	195/65R15	91	V		7.4	6J	201	635	300	BSW	E B 71 2	NO
	195/65R15	95	H	XL	7.4	6J	201	635	340	BSW	C B 71 2	NO
	195/65R15	91	H		7.4	6J	201	635	300	BSW	E B 71 2	NO
	205/65R15	94	V		7.7	6J	209	647	300	BSW	C B 71 2	NO
	215/65R15	96	V		7.7	6 1/2J	221	661	300	BSW	C B 71 2	NO
	205/70R15	96	H		7.7	6J	209	669	300	BSW	E B 71 2	NO
	215/70R15	98	H		7.7	6 1/2J	221	683	300	BSW	C B 71 2	NO
	16	195/45R16	84	W	XL	7.4	6 1/2J	195	582	340	BSW	E B 71 2
205/45R16		87	W	XL	8	7J	206	590	340	BSW	E B 71 2	YES
195/50R16		88	V	XL	7.4	6J	201	602	340	BSW	C B 71 2	YES
185/55R16		83	V		7.4	6J	194	610	300	BSW	E B 70 2	YES
195/55R16		91	V	XL	7.4	6J	201	620	340	BSW	C B 71 2	YES
195/55R16		87	V		7.4	6J	201	620	300	BSW	E B 71 2	YES
205/55R16		91	V		7.7	6 1/2J	214	632	300	BSW	C B 71 2	YES
205/55R16		94	V	XL	7.7	6 1/2J	214	632	340	BSW	C B 71 2	YES
195/60R16		89	V		7.4	6J	201	640	300	BSW	E B 71 2	NO
205/60R16		96	V	XL	7.7	6J	209	652	340	BSW	C B 71 2	NO
205/60R16		92	V		7.7	6J	209	652	300	BSW	E B 71 2	NO
215/60R16		95	V		7.7	6 1/2J	221	664	300	BSW	C B 71 2	NO
225/60R16		102	V	XL	7.7	6 1/2J	228	676	340	BSW	C B 71 2	NO
235/60R16		100	V		8	7J	240	688	300	BSW	C B 71 2	NO
205/65R16		95	H		7.7	6J	209	672	300	BSW	C B 71 2	NO
215/65R16		98	H		7.7	6 1/2J	221	686	300	BSW	C B 71 2	NO

1inch=25.4mm | 1kPa=0.142psi | 1KG=2.2 lbs | XL Extra Load | LI Load Index | SS Speed Symbol

ENVIRONMENTALLY FRIENDLY HP TIRE

compound formulation with HD Silica and advanced SBR to ensure safety while driving.



■ **High Performance Safety**

Unique asymmetric pattern design features three main ribs and specially designed blocks which maximize the tire's contact footprint area for great cornering and stability on dry roads.

■ **Driving Safety**

Thin strips on the inside of the groove improve water drainage and better disperse heat.

■ **Wet Performance**

Four main grooves provide efficiently water drainage to improve handling and grip on wet roads.





- **Fuel Economy**
The special tread compound reduces rolling resistance to provide more efficient fuel consumption.
- **Driving Comfort**
The varying pitch order and block sipe design better absorb vibrations emitted from the tire for a quieter ride.
- **Tread Pattern**
The asymmetric tread pattern contains a center rib for strong grip and handling which allows for precision steering and braking. The four wide grooves are inlaid with horizontal notches which enhance water expulsion for great handling in wet conditions.

Rim	Size	LI	SR	XL	Tread Depth	Standard RIM	Section Width	Overall Diameter	Pressure	SW	Labeling	Rim Protection
					mm	inch	mm	mm	kPa			
16	215/45ZR16	90	Y	XL	7.5	7J	213	600	340	BSW	E C 72 2	YES
	205/50ZR16	87	W		8	6 1/2J	214	612	300	BSW	E C 71 2	YES
	205/55ZR16	94	W	XL	8.2	6 1/2J	214	632	340	BSW	C C 70 2	YES
	215/55ZR16	97	W	XL	8.2	7J	226	642	340	BSW	C C 72 2	YES
	225/55ZR16	99	W	XL	8.2	7J	233	654	340	BSW	C C 72 2	YES

1inch=25.4mm 1kPa=0.142psi 1KG=2.2 lbs XL Extra Load LI Load Index SS Speed Symbol



U11 Innovative
Ultra High performance tire
 that combines comfort with low
 fuel consumption



Rim	Size	LI	SR	XL	Tread Depth	Standard RIM	Section Width	Overall Diameter	Pressure	SW	Labeling	Rim Protection
					mm	inch	mm	mm	kPa			
17	195/40ZR17	81	Y	XL	7.5	7J	200	588	340	BSW	E C 70 2	YES
	205/40ZR17	84	W	XL	8	7 1/2J	212	596	340	BSW	E C 71 2	YES
	215/40ZR17	87	Y	XL	7.5	7 1/2J	218	604	340	BSW	E C 72 2	YES
	245/40ZR17	95	W	XL	8	8 1/2J	248	628	340	BSW	C C 71 2	YES
	195/45ZR17	85	Y	XL	7.5	6 1/2J	195	608	340	BSW	E C 70 2	YES
	205/45ZR17	88	W	XL	8	7J	206	616	340	BSW	E C 72 2	YES
	215/45ZR17	91	W	XL	8	7J	213	626	340	BSW	E C 72 2	YES
	225/45ZR17	94	W	XL	8	7 1/2J	225	634	340	BSW	E C 72 2	YES
	235/45ZR17	97	W	XL	8.2	8J	236	644	340	BSW	C C 72 2	YES
	245/45ZR17	99	Y	XL	7.5	8J	243	652	340	BSW	C C 71 2	YES
	205/50ZR17	93	W	XL	8	6 1/2J	214	638	340	BSW	E C 72 2	YES
	215/50ZR17	95	W	XL	8	7J	226	648	340	BSW	C C 72 2	YES
	225/50ZR17	98	W	XL	8.2	7J	233	658	340	BSW	E C 72 2	YES
	235/50ZR17	100	Y	XL	7.5	7 1/2J	245	668	340	BSW	C C 72 2	YES
	205/55ZR17	95	Y	XL	7.5	6 1/2J	214	658	340	BSW	C C 71 2	YES
	215/55ZR17	94	W		8	7J	226	668	300	BSW	C C 71 2	YES
	225/55ZR17	101	W	XL	8.2	7J	233	680	340	BSW	E C 72 2	YES
	18	215/35ZR18	84	Y	XL	7.5	7 1/2J	218	607	340	BSW	E C 72 2
225/35ZR18		87	Y	XL	7.5	8J	230	615	340	BSW	E C 72 2	YES
235/35ZR18		90	Y	XL	7.5	8 1/2J	241	621	340	BSW	E C 71 2	YES
245/35ZR18		92	Y	XL	7.5	8 1/2J	248	629	340	BSW	E C 71 2	YES
255/35ZR18		94	Y	XL	8	9J	260	635	340	BSW	E C 73 2	YES
265/35ZR18		97	Y	XL	7.5	9 1/2J	271	643	340	BSW	C C 73 2	YES
215/40ZR18		89	Y	XL	7.5	7 1/2J	218	629	340	BSW	E C 72 2	YES
225/40ZR18		92	W	XL	8	8J	230	637	340	BSW	E C 71 2	YES
235/40ZR18		95	W	XL	8	8 1/2J	241	645	340	BSW	C C 71 2	YES
245/40ZR18		97	Y	XL	8	8 1/2J	248	653	340	BSW	C C 71 2	YES
255/40ZR18		99	Y	XL	7.5	9J	260	661	340	BSW	C C 73 2	YES
275/40ZR18		103	Y	XL	7.5	9 1/2J	278	677	340	BSW	C C 73 2	YES
215/45ZR18		93	Y	XL	7.5	7J	213	651	340	BSW	E C 72 2	YES
225/45ZR18		95	W	XL	8	7 1/2J	225	659	340	BSW	C C 72 2	YES
235/45ZR18		98	Y	XL	7.5	8J	236	669	340	BSW	C C 72 2	YES
245/45ZR18		100	W	XL	8	8J	243	677	340	BSW	C C 71 2	YES

1inch=25.4mm | 1kPa=0.142psi | 1KG=2.2 lbs | XL Extra Load | LI Load Index | SS Speed Symbol

Rim	Size	LI	SR	XL	Tread Depth	Standard RIM	Section Width	Overall Diameter	Pressure	SW	Labeling	Rim Protection	
					mm	inch	mm	mm	kPa				
18	255/45ZR18	103	Y	XL	7.5	8 1/2J	255	687	340	BSW	C C 73 2	YES	
	19	255/30ZR19	91	Y	XL	7.5	9J	260	637	340	BSW	E C 73 2	YES
		265/30ZR19	93	Y	XL	8	9 1/2J	271	643	340	BSW	E C 73 2	YES
		275/30ZR19	96	Y	XL	8	9 1/2J	278	649	340	BSW	C C 73 2	YES
		215/35ZR19	85	Y	XL	7.5	7 1/2J	218	633	340	BSW	E C 72 2	YES
		225/35ZR19	88	Y	XL	7.5	8J	230	641	340	BSW	E C 72 2	YES
		235/35ZR19	91	Y	XL	8	8 1/2J	241	647	340	BSW	E C 71 2	YES
		245/35ZR19	93	Y	XL	8	8 1/2J	248	655	340	BSW	C C 71 2	YES
		255/35ZR19	96	Y	XL	8	9J	260	661	340	BSW	C C 73 2	YES
		265/35ZR19	98	Y	XL	7.5	9 1/2J	271	669	340	BSW	C C 73 2	YES
		275/35ZR19	100	Y	XL	8	9 1/2J	278	675	340	BSW	C C 73 2	YES
		225/40ZR19	93	Y	XL	7.5	8J	230	663	340	BSW	C C 72 2	YES
		235/40ZR19	96	Y	XL	7.5	8 1/2J	241	671	340	BSW	C C 71 2	YES
		245/40ZR19	98	Y	XL	8	8 1/2J	248	679	340	BSW	E C 71 2	YES
		275/40ZR19	105	Y	XL	7.5	9 1/2J	278	703	340	BSW	C C 73 2	YES
		235/45ZR19	99	Y	XL	7.5	8J	236	695	340	BSW	C C 72 2	YES
		245/45ZR19	102	Y	XL	7.5	8J	243	703	340	BSW	C C 71 2	YES
		255/45ZR19	104	W	XL	8	8 1/2J	255	713	340	BSW	TBD	YES
275/45ZR19		108	Y	XL	7.5	9J	273	731	340	BSW	C C 73 2	YES	
285/45ZR19	111	Y	XL	8	9 1/2J	285	739	340	BSW	C C 73 2	YES		
20	255/50ZR19	107	Y	XL	8	8J	265	739	340	BSW	C C 73 2	YES	
	245/35ZR20	95	Y	XL	7.5	8 1/2J	248	680	340	BSW	C C 71 2	YES	
	255/35ZR20	97	Y	XL	7.5	9J	260	686	340	BSW	C C 73 2	YES	
	275/35ZR20	102	Y	XL	7.5	9 1/2J	278	700	340	BSW	C C 73 2	YES	
	295/35ZR20	105	Y	XL	7.5	10 1/2J	301	714	340	BSW	C C 73 2	YES	
	315/35ZR20	110	Y	XL	8	11J	320	728	340	BSW	C C 73 2	YES	
	245/40ZR20	99	Y	XL	7.5	8 1/2J	248	704	340	BSW	C C 71 2	YES	
	255/40ZR20	101	Y	XL	7.5	9J	260	712	340	BSW	C C 73 2	YES	
	275/40ZR20	106	Y	XL	8	9 1/2J	278	728	340	BSW	C C 73 2	YES	
	275/45ZR20	110	Y	XL	8	9J	273	756	340	BSW	TBD	YES	
	21	325/30ZR21	108	Y	XL	8	11 1/2J	331	729	340	BSW	C C 72 1	YES
		285/35ZR21	105	Y	XL	8	10J	290	733	340	BSW	C C 73 2	YES
		295/35ZR21	107	Y	XL	8	10 1/2J	301	739	340	BSW	C C 73 2	YES

1inch=25.4mm | 1kPa=0.142psi | 1KG=2.2 lbs | XL Extra Load | LI Load Index | SS Speed Symbol

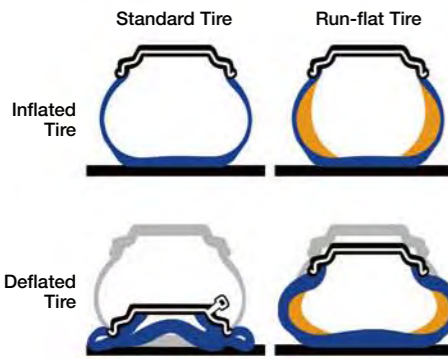
RUN-FLAT

NEW TECHNOLOGY

H12 RFT

SU01 RFT

U11 RFT



RFT Product Features:

1. No more delays or being stranded on remote highways due to a flat tire. RFT products will continue to drive at up to 80 KPH without having to be replaced immediately.
2. Helps to avoid accidents caused by the loss of control from punctures or air leaks, increasing overall safety.
3. Even when the tire begins leaking air you can drive to your local tire dealer to have it repaired. RFT technology also means there is no need to carry a spare which helps increase storage space within the vehicle.

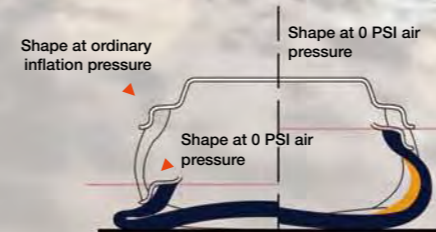
Rim	Size	LI	SR	XL	Tread Depth	Standard RIM	Section Width	Overall Diameter	Pressure	SW	Labeling	Rim Protection
					mm	inch	mm	mm	kPa			
H12 RFT												
17	195/55RF16	91	V	XL	7.4	6J	201	620	340	BSW	E B 71 2	YES
SU01 RFT												
18	255/55RF18	105	H		8	8J	265	737	300	BSW		YES
	235/50RF18	97	V		8	7 1/2J	245	693	300	BSW	E B 71 2	YES
U11 RFT												
16	205/55ZRF16	94	W	XL	8.2	6 1/2J	214	632	340	BSW	E C 70 2	YES
	225/55ZRF16	99	W	XL	8.2	7J	233	654	340	BSW	C C 72 2	YES
17	205/45ZRF17	88	W	XL	8	7J	206	616	340	BSW	E C 72 2	YES
	225/45ZRF17	94	W	XL	8	7 1/2J	225	634	340	BSW	E C 72 2	YES
	205/50ZRF17	93	W	XL	8	6 1/2J	214	638	340	BSW	E C 72 2	YES
	225/50ZRF17	98	W	XL	8.2	7J	233	658	340	BSW	E C 72 2	YES
	225/55ZRF17	101	W	XL	8.2	7J	233	680	340	BSW	E C 72 2	YES
18	255/35ZRF18	94	Y	XL	8	9J	260	635	340	BSW	E C 73 2	YES
	225/40ZRF18	92	W	XL	8	8J	230	637	340	BSW	E C 71 2	YES
	245/40ZRF18	97	Y	XL	8	8 1/2J	248	653	340	BSW	E C 72 2	YES
	225/45ZRF18	95	W	XL	8	7 1/2J	225	659	340	BSW	E C 72 2	YES
	245/45ZRF18	100	W	XL	8	8J	243	677	340	BSW	C C 71 2	YES
	245/50ZRF18	100	Y		8	7 1/2J	253	703	300	BSW	C C 71 2	YES
19	275/35ZRF19	100	Y	XL	8	9 1/2J	278	675	340	BSW	E C 73 2	YES
	245/40ZRF19	98	Y	XL	8	8 1/2J	248	679	340	BSW	E C 71 2	YES
	275/40ZRF19	101	W		7.5	9 1/2J	278	703	300	BSW	C C 72 2	YES
	235/45ZRF19	99	W	XL	7.5	8J	236	695	340	BSW	C C 72 2	YES
	245/45ZRF19	102	W	XL	7.5	8J	243	703	340	BSW	C C 72 2	YES
	255/50RF19	103	V		8	8J	265	739	300	BSW	C C 72 2	YES

ROADX

NEW TECHNOLOGY GREATER SAFETY

H12 RFT / SU01 RFT / U11 RFT

This is where run-flat tires come in; after the tire begins leaking air, the sidewall maintains its shape in order to continue to support the weight of the vehicle.



Run-flat tires (RFT), also known as "self-supporting run-flat tires," are an important safety feature for any vehicle. A Run-flat tire is built with a thicker sidewall to help support the tire shape after losing air. This allows the tire to continue to run safely, but at a limited speed and mileage. When normal tires are punctured, they can instantly lead to a severe sidewall collapse; in the event of a collapse, the vehicle loses its only support which can cause the vehicle's center of gravity to change instantaneously. RFT helps to lessen the severity of a flat tire and allows you to get to the closest destination safely.

4S

ALL-WEATHER



SPECIALTY ALL SEASON PRODUCT FOR EUROPE.



Grip

New sipe design substantially enhances tread block grip and overall braking.

Driving Comfort

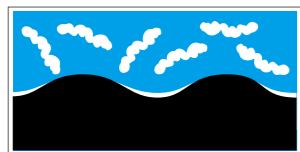
Tread design is optimized for a comfortable drive year-round.

Handling and Stability

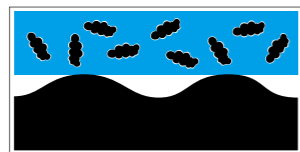
New tread design with three main grooves that greatly improves handling and stability.

1 Specialized silica compound reduces rolling resistance and improves grip.

White Carbon Black Filler

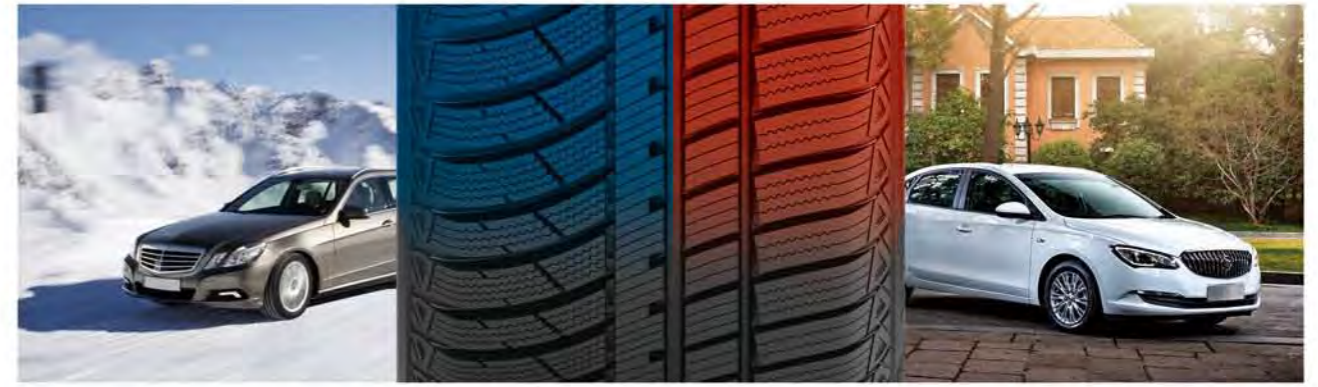
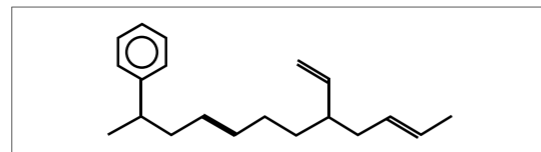


Carbon Black Filler



The friction generated using white carbon black is smaller when compared to standard carbon black to greatly reduce rolling resistance. It also had greater elasticity making it easier to absorb abrasions and increase grip.

2 Specialized winter compound solutions prepare the tire to perform year-round and improves hydroplaning resistance on wet roads.



Inner Pattern

Improved handling in snow and rain

Outer Pattern

Handling performance and stability in dry conditions

- Excellent handling for both snow and rain.
- Tread designed to reduce driving noise.
- Great handling and driving stability.
- Tread compounds made specifically for all-season use so you can enjoy a year-round carefree driving experience.

Rim	Size	LI	SR	XL	Tread Depth	Standard RIM	Section Width	Overall Diameter	Pressure	SW	Labeling	Rim Protection
					mm	inch						
13	155/70R13	75	T		8	4.50B	157	548	300	BSW	E B 71 2	YES
	155/80R13	79	T		8	4.50B	157	578	300	BSW	E B 71 2	YES
14	165/60R14	79	H	XL	8	5J	170	554	340	BSW	E B 71 2	YES
	185/60R14	82	T		8.5	5 1/2J	189	578	300	BSW	E B 71 2	YES
	155/65R14	75	T		8	4 1/2J	157	558	300	BSW	E B 71 2	YES
	165/65R14	79	T		8	5J	170	570	300	BSW	E B 71 2	YES
	175/65R14	82	T		8.5	5J	177	584	300	BSW	E B 71 2	YES
	185/65R14	86	T		8.5	5 1/2J	189	596	300	BSW	E B 71 2	YES
	165/70R14	85	T	XL	8	5J	170	588	340	BSW	E B 71 2	YES
15	175/70R14	84	T		8.5	5J	177	602	300	BSW	E B 71 2	YES
	175/70R14	88	T	XL	8.5	5J	177	602	340	BSW	E B 71 2	YES
	195/50R15	82	H		8.5	6J	201	577	300	BSW	E B 71 2	YES
	185/55R15	82	H		8.5	6J	194	585	300	BSW	E B 71 2	YES
	195/55R15	85	H		8.5	6J	201	595	300	BSW	E B 71 2	YES
	185/60R15	88	H	XL	8.5	5 1/2J	189	603	340	BSW	E B 71 2	YES
	195/60R15	88	H		8.5	6J	201	615	300	BSW	C B 71 2	YES
	175/65R15	84	H		8.5	5J	177	609	300	BSW	E B 71 2	YES
	185/65R15	88	H		8.5	5 1/2J	189	621	300	BSW	E B 71 2	YES
	185/65R15	92	T	XL	8.5	5 1/2J	189	621	340	BSW	E B 71 2	YES
16	195/65R15	91	H		8.5	6J	201	635	300	BSW	C B 71 2	YES
	205/45R16	87	V	XL	8.5	7J	206	590	340	BSW	E B 71 2	YES
	195/55R16	87	V		8.5	6J	201	620	300	BSW	E B 71 2	YES
	205/55R16	94	H	XL	8.5	6 1/2J	214	632	340	BSW	E B 71 2	YES
	205/55R16	94	V	XL	8.5	6 1/2J	214	632	340	BSW	E B 71 2	YES
	215/55R16	97	V	XL	8.5	7J	226	642	340	BSW	C B 71 2	YES
	225/55R16	99	V	XL	8.5	7J	233	654	340	BSW	C B 72 2	YES
	205/60R16	96	V	XL	8.5	6J	209	652	340	BSW	C B 71 2	YES
17	215/60R16	99	V	XL	8.5	6 1/2J	221	664	340	BSW	C B 71 2	YES
	225/45R17	94	V	XL	8.5	7 1/2J	225	634	340	BSW	E B 72 2	YES
	205/50R17	93	V	XL	8.5	6 1/2J	214	638	340	BSW	E B 71 2	YES
	225/50R17	98	V	XL	8.5	7J	233	658	340	BSW	C B 72 2	YES

1inch=25.4mm | 1kPa=0.142psi | 1KG=2.2 lbs | XL Extra Load | LI Load Index | SS Speed Symbol

RXQUEST

SU01

SUMMER-SUV-UHP

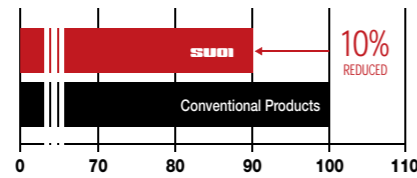


Specially designed UHP SUV tire.

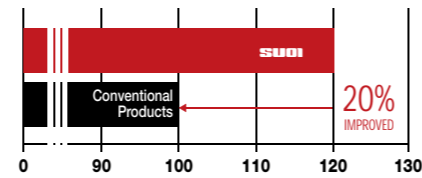


Four main grooves drain water efficiently to improve handling in wet conditions.

Rolling Resistance



Tire Hydroplaning Resistance



■ **Safety**

The center rib design provides greater traction for safer acceleration and braking.

■ **Wear Resistance**

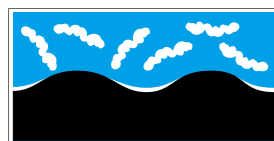
The silicon compound tread makes the tire more wear resistance.

■ **Comfortable Ride**

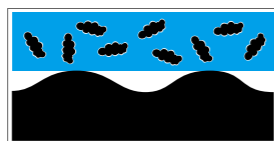
The tread block pitch and built-in sipes reduce tire vibration and noise for a more comfortable ride.

1 Extensive use of white carbon black helps reduce tire rolling resistance and improve skid resistance.

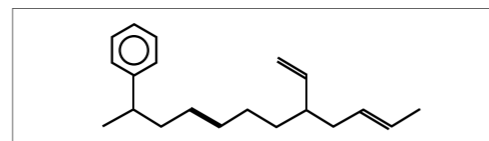
White Carbon Black Filler



Carbon Black Filler



2 The body material is composed of a special tread compound to increase hydroplaning resistance and improve heat dissipation.



The friction generated using white carbon black is smaller when compared to standard carbon black to greatly reduce rolling resistance. It also had greater elasticity making it easier to absorb abrasions and increase grip.

Rim	Size	LI	SR	XL	Tread Depth	Standard RIM	Section Width	Overall Diameter	Pressure	SW	Labeling	Rim Protection
					mm	inch	mm	mm	kPa			
17	235/55R17	103	W	XL	8	7 1/2J	245	690	340	BSW	C B 71 2	YES
	275/40R18	103	W	XL	8	9 1/2J	278	677	340	BSW	C A 71 2	YES
	235/50R18	97	V		8	7 1/2J	245	693	300	BSW	E B 71 2	YES
	225/55R18	102	W	XL	8	7J	233	705	340	BSW	C B 71 2	YES
	235/55R18	104	W	XL	8	7 1/2J	245	715	340	BSW	B B 71 2	YES
	255/55R18	109	Y	XL	8	8J	265	737	340	BSW	B A 71 2	YES
	225/60R18	100	V		8	6 1/2J	228	727	300	BSW	C B 71 2	YES
	235/60R18	107	W	XL	8	7J	240	739	340	BSW	B B 71 2	YES
	245/60R18	105	V		8	7J	248	751	300	BSW	C B 71 2	YES
	255/60R18	112	V	XL	8	7 1/2J	260	763	340	BSW	C A 71 2	YES
19	265/60R18	110	V		8	8J	272	775	300	BSW	B A 71 2	YES
	265/50R19	110	Y	XL	8	8 1/2J	277	749	340	BSW	B A 71 2	YES
	225/55R19	99	W		8	7J	233	731	300	BSW	TBD	YES
	235/55R19	101	W		8	7 1/2J	245	741	300	BSW	C B 71 2	YES
	245/55R19	103	V		8	7 1/2J	253	753	300	BSW	C B 71 2	YES
20	255/55R19	111	Y	XL	8	8J	265	763	340	BSW	B A 71 2	YES
	275/35R20	102	W	XL	8	9 1/2J	278	700	340	BSW	C A 71 2	YES
	295/35R20	105	Y	XL	8	10 1/2J	301	714	340	BSW	C A 71 1	YES
	255/40R20	101	Y	XL	8	9J	260	712	340	BSW	C A 71 2	YES
	285/40R20	104	Y		8	10J	290	736	300	BSW	C A 71 1	YES
	265/50R20	111	Y	XL	8	8 1/2J	277	774	340	BSW	B A 71 2	YES
	285/50R20	116	W	XL	8	9J	297	794	340	BSW	C A 71 1	YES
	255/55R20	110	Y	XL	8	8J	265	788	340	BSW	C A 71 2	YES
	275/55R20	117	W	XL	8	8 1/2J	284	810	340	BSW	B A 71 2	YES
275/60R20	119	V	XL	8	8J	279	838	340	BSW	B A 71 2	YES	
21	275/45R21	110	Y	XL	8	9J	273	781	340	BSW	C A 71 2	YES
22	305/40R22	114	W	XL	8	11J	313	803	340	BSW	C A 71 1	YES
	285/45R22	114	W	XL	8	9 1/2J	285	815	340	BSW	C A 71 1	YES
	305/45R22	118	W	XL	8	10J	303	833	340	BSW	C A 71 1	YES

1inch=25.4mm | 1kPa=0.142psi | 1KG=2.2 lbs | XL Extra Load | LI Load Index | SS Speed Symbol

RXQUEST

H/T01

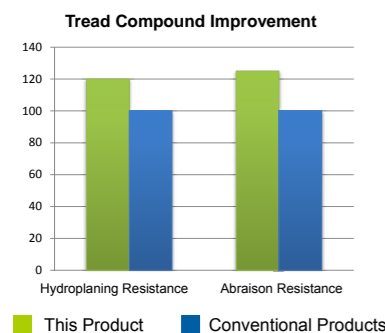
SUMMER-SUV HT

WEAR RESISTANCE

HANDLING

CROSS-COUNTRY

BRAKING



Optimized High Performance urban on and off-road pattern suitable for Light Trucks and SUVs with excellent endurance and low noise generation.

■ **Handling**

A ladder-like structure at the bottom of the grooves connects the blocks on both sides. This design increases tread strength, improves handling, and efficiently reduces stone retention.



■ **Quiet**

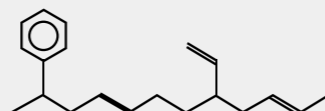
The precision spacing of tread blocks, angles, and dense small grooves efficiently reduce noise.

■ **Off-Road**

The optimal combination of wide grooves and specially designed tread blocks greatly improves sport properties and driving comfort off-road.

Rim	Size	LI	SR	XL	Tread Depth	Standard RIM	Section Width	Overall Diameter	Pressure	SW	Labeling	Rim Protection
					mm	inch	mm	mm	kPa			
14	205/75R14	95	S		9.5	5 1/2J	203	664	300	WR	E C 71 2	NO
	215/75R14	100	S		9.5	6J	216	678	300	WR	E C 71 2	NO
15	205/70R15	96	T		9	6J	209	669	300	WR	E C 71 2	NO
	215/70R15	98	T		9	6 1/2J	221	683	300	WR	E C 71 2	NO
	225/70R15	100	T		9	6 1/2J	228	697	300	BSW	E C 71 2	NO
	225/70R15	100	T		9	6 1/2J	228	697	300	WR	E C 71 2	NO
	205/75R15	97	T		9.5	5 1/2J	203	689	300	WR	E C 71 2	NO
	215/75R15	100	S		9.2	6J	216	703	300	BSW	E B 71 2	NO
	215/75R15	100	T		9.2	6J	216	703	300	BSW	E C 71 2	NO
	215/75R15	100	T		9.2	6J	216	703	300	WR	E C 71 2	NO
	225/75R15	102	T		9.2	6J	223	719	300	BSW	E C 71 2	NO
	225/75R15	102	T		9.2	6J	223	719	300	WR	E C 71 2	NO
16	235/75R15	105	S		9.5	6 1/2J	235	733	300	BSW	E B 71 2	NO
	235/75R15	105	T		9.5	6 1/2J	235	733	300	BSW	E C 71 2	NO
	235/75R15	105	T		9.5	6 1/2J	235	733	300	WR	E B 71 2	NO
	215/65R16	98	T		9	6 1/2J	221	686	300	BSW	E B 71 2	NO
	215/70R16	100	T		9	6 1/2J	221	708	300	BSW	E C 71 2	NO
	225/70R16	103	T		9	6 1/2J	228	722	300	BSW	E C 71 2	NO
	235/70R16	106	T		9	7J	240	736	300	BSW	C C 71 2	NO
17	245/70R16	111	T	XL	9	7J	248	750	340	BSW	C C 72 2	NO
	255/70R16	111	T		9	7 1/2J	260	764	300	BSW	C C 72 2	NO
	265/70R16	112	S		9	8J	272	778	300	BSW	C C 72 2	NO
	215/60R17	96	H		9	6 1/2J	221	690	300	BSW	E C 71 2	NO
	225/65R17	102	S		9.2	6 1/2J	228	724	300	BSW	E B 71 2	NO
	235/65R17	104	S		9	7J	240	738	300	BSW	E C 71 2	NO
18	245/65R17	107	S		9	7J	248	750	300	BSW	E C 71 2	NO
	265/65R17	112	S		9	8J	272	776	300	BSW	C C 72 2	NO
	265/70R17	115	T		9	8J	272	804	300	BSW	C C 72 2	NO
	235/60R18	107	H	XL	9	7J	240	739	340	BSW	E C 72 2	NO
265/65R18	114	H		9	8J	272	801	300	BSW	C C 72 2	YES	

Employs a specialised rubber compound solution to improve hydroplaning resistance and improve heat dissipation.



1inch=25.4mm | 1kPa=0.142psi | 1KG=2.2 lbs | XL Extra Load | LI Load Index | SS Speed Symbol



High Performance

Light Truck and SUV tire with excellent endurance and handling.



■ Safety

The tread pattern grooves built into the crown are designed to effectively drain water and offer great traction on wet roads to enhance overall safety.

■ Tread Wear

The tread is composed of a special formula made specifically to increase wear resistance.

■ Comfort

A varying pitch tread block design provides a comfortable and quiet ride.

■ Handling

The asymmetric tread pattern improves handling and braking on wet and dry roads.

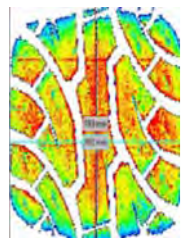


Rim	Size	LI	SR	XL	Tread Depth	Standard RIM	Section Width	Overall Diameter	Pressure	SW	Labeling	Rim Protection
					mm	inch	mm	mm	kPa			
15	255/70R15	108	T		9	7 1/2J	260	739	300	BSW	C C 72 2	YES
	265/70R15	112	T		9	8J	272	753	300	BSW	C C 72 2	YES
16	275/70R16	114	H		8.8	8J	279	792	300	BSW	C C 72 2	YES
17	225/60R17	99	H		9	6 1/2J	228	702	300	BSW	E C 71 2	YES
	235/60R17	102	H		9	7J	240	714	300	BSW	C C 71 2	YES
	255/60R17	106	H		8.8	7 1/2J	260	738	300	BSW	C C 72 2	YES
	235/65R17	104	H		9	7J	240	738	300	BSW	C C 71 2	YES
	275/65R17	115	H		9	8J	279	790	300	BSW	C C 72 2	YES
	285/65R17	116	H		9	8 1/2J	292	802	300	BSW	C C 72 2	YES
	245/70R17	110	T		9	7J	248	776	300	BSW	C C 71 2	YES
18	235/55R18	104	V	XL	8	7 1/2J	245	715	340	BSW	C C 72 2	YES
	255/55R18	105	V		8.6	8J	265	737	300	BSW	C C 72 2	YES
	225/60R18	100	H		8.8	6 1/2J	228	727	300	BSW	E C 71 2	YES
	235/60R18	107	V	XL	9	7J	240	739	340	BSW	C C 72 2	YES
	245/60R18	105	H		9	7J	248	751	300	BSW	C C 71 2	YES
	265/60R18	110	H		9	8J	272	775	300	BSW	C C 72 2	YES
	265/70R18	116	T		9	8J	272	829	300	BSW	C C 72 2	YES
19	255/50R19	103	V		8.6	8J	265	739	300	BSW	C C 72 2	YES
	235/55R19	101	V		8	7 1/2J	245	741	300	BSW	E C 71 2	YES
20	225/35R20	90	W	XL	8.6	8J	230	666	340	BSW	C C 71 2	YES
	245/45R20	103	W	XL	8.6	8J	243	728	340	BSW	E C 72 2	YES
	275/55R20	113	H		8	8 1/2J	284	810	300	BSW	C C 72 2	YES
	275/60R20	115	S		8.8	8J	279	838	300	BSW	C C 72 2	YES

1inch=25.4mm 1kPa=0.142psi 1KG=2.2 lbs XL Extra Load LI Load Index SS Speed Symbol



All-Terrain tire for pickups, vans, and SUVs. Great traction on wet and muddy terrain, excellent handling, and outstanding driving comfort on both urban off-road and poorly-paved terrain.



Contour Design

The new contour design improves carcass strength to ensure superior carrying capacity, and at the same time enables uniform contact pressure distribution for even tread wear.



■ **Wet Performance**

Wide grooves within the tread effectively drain water from the tire for greater performance in wet weather conditions.

■ **Handling Performance**

Reinforced central rib enhances maneuverability and high-speed driving performance.

■ **Specially Designed Tread**

The wide all-terrain tread pattern contains large blocks and wide grooves for superior driving capability on both on and off-road conditions.



Rim	Size	LI	SR	XL	Tread Depth	Standard RIM	Section Width	Overall Diameter	Pressure	SW	Labeling	Rim Protection
					mm	inch	mm	mm	kPa			
15	31x10.50R15LT	109	R		13	8 1/2J	268	775	350	BSW	TBD	NO
	31x10.50R15LT	109	R		13	8 1/2J	268	775	350	OWL	E B 72 2	NO
	LT215/75R15	100/97	R		12	6J	216	703	350	BSW	TBD	NO
	LT215/75R15	100/97	R		12	6J	216	703	350	OWL	E B 72 2	NO
	LT235/75R15	104/101	R		13	6 1/2J	235	733	350	OWL	E B 72 2	NO
16	LT225/70R16	102/99	R		12.5	6 1/2J	228	722	350	OWL	TBD	NO
	LT225/70R16	102/99	R		12.5	6 1/2J	228	722	350	OWL	E B 72 2	NO
	LT265/70R16	110/107	R		13	8J	272	778	350	OWL	E B 72 2	NO
	LT225/75R16	115/112	R		13	6J	223	744	550	BSW	TBD	NO
	LT225/75R16	115/112	R		13	6J	223	744	550	OWL	E B 72 2	NO
	LT245/75R16	120/116	S		13	7J	248	774	550	OWL	E B 72 2	NO
	LT265/75R16	123/120	R		13	7 1/2J	267	804	550	OWL	TBD	NO
	LT215/85R16	115/112	R		12.5	6J	216	772	550	BSW	TBD	NO
	LT215/85R16	115/112	R		12.5	6J	216	772	550	OWL	E B 72 2	NO
	LT235/85R16	120/116	R		13	6 1/2J	235	806	550	BSW	TBD	NO
LT235/85R16	120/116	R		13	6 1/2J	235	806	550	OWL	E B 72 2	NO	

1inch=25.4mm	1kPa=0.142psi	1KG=2.2 lbs	XL Extra Load	LI Load Index	SS Speed Symbol
SBL: Serrated Black Letter			OWL: Outlined White Letter		



Staggered shoulder blocks improve traction and climbing capability.



Safety

The shield pattern which extends from the sidewall protects the sidewall from abrasions and increase traction on mud roads. The carcass is designed with three layers of polyester fabric to make it rugged and resistant to strong impacts.

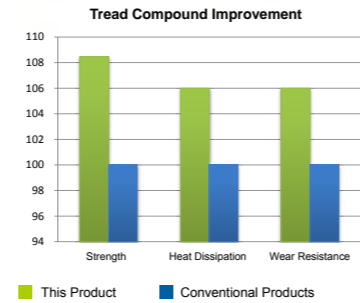


Grooves

Deepened grooves allow mud to easily be discharged from the tread at both high and low speeds. The design also offers better grip when traveling on rocky or rugged roads.

Shoulder Design

Large blocks on the shoulder vastly enhance handling on muddy and rock roads.



Rim	Size	LI	SR	XL	Tread Depth	Standard RIM	Section Width	Overall Diameter	Pressure	SW	Labeling	Rim Protection
					mm	inch	mm	mm	kPa			
15	LT235/75R15	104/101	Q		15.3	6 1/2J	235	739	350	OWL		YES
	30x9.50R15LT	104	Q		15.3	7 1/2J	240	756	350	OWL		YES
	31x10.50R15LT	109	Q		15.3	8 1/2J	268	781	350	OWL		YES
	33x12.50R15LT	108	Q		15.3	10J	318	832	250	OWL		YES
	35x12.50R15LT	113	Q		15.3	10J	318	883	250	OWL		YES
16	LT245/75R16	120/116	Q		15.3	7J	248	774	550	OWL		YES
	LT235/85R16	120/116	Q		15.3	6 1/2J	235	812	550	OWL		YES
17	LT265/70R17	121/118	Q		15.5	8J	272	810	550	OWL		YES
	LT285/70R17	121/118	Q		15.5	8 1/2J	292	838	550	OWL		YES
	33x12.50R17LT	114	Q		16.3	10J	318	832	350	OWL		YES
18	35x12.50R17LT	121	Q		16.3	10J	318	883	450	OWL		YES
	33x12.50R18LT	118	Q		16.3	10J	318	832	450	BSW		YES
	35x12.50R18LT	123	K		16.7	10J	318	883	450	BSW		YES
20	35x12.50R18LT	123	Q		16.7	10J	318	883	450	BSW		YES
	LT305/55R20	121/118	Q		16.3	9 1/2J	316	850	450	BSW		YES
	33x12.50R20LT	114	Q		16.3	10J	318	832	450	BSW		YES
	35x12.50R20LT	121	Q		16.3	10J	318	883	450	BSW		YES

1inch=25.4mm	1kPa=0.142psi	1KG=2.2 lbs	XL Extra Load	LI Load Index	SS Speed Symbol
OWL Outline White Letter					



High strength capabilities (puncture and scratch resistant)

High wear resistance and braking capabilities

Uses a specialized rubber compound to create a more balanced tire with strong grip.



Specially designed tire developed for **cross-country enthusiasts**

RXQUEST

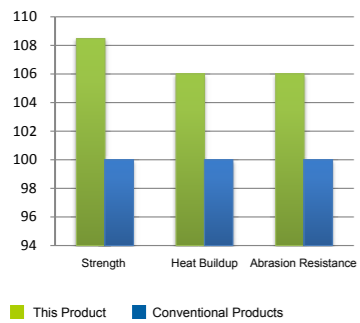
CO2

SUMMER-VAN

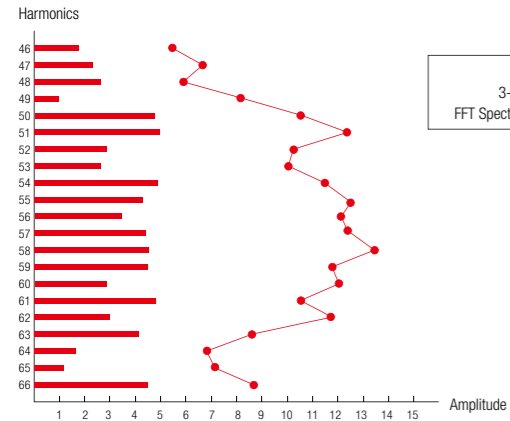
WEAR RESISTANCE HANDING PUNCTURE RESISTANT RESILIENT



Tread Compound Improvement

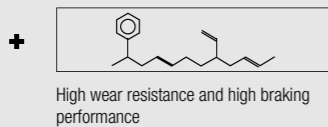
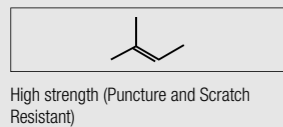


Specially designed pattern for commercial light trucks, minivans, and minibuses that offers outstanding handling on wet surfaces as well as excellent high speed durability.



Tread Pattern
Original pattern design ensures excellent performance and greater driving comfort on wet and dry roads.

Driving Comfort
The tread has a varied pitch design created to reduce noise and allow for a better driving experience.



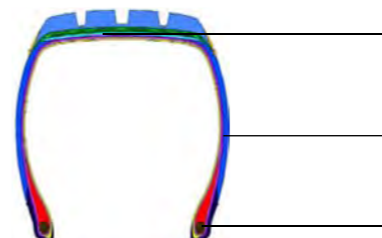
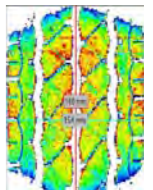
Use of specialized rubber compounds achieves a balance of strength and braking performance.

- Tread Design**
Wider and deeper grooves increase wear resistance, efficiently drain water, and provide greater handling and stability.
- Tire Structure**
The reinforced carcass allows for greater load bearing capabilities.



Contour Design

The new tire profile improves contact shape for a strengthened carcass. This strengthened carcass then provides improved carrying capacity.



- Nylon cap strips wound in the belt cover the entire shoulder for improved durability to resist irregular wear.
- Strengthened double carcass design improve the sidewall's impact resistance.
- Sturdy bead apex structure and design support the tire load to improve braking.

Rim	Size	LI	SR	XL	Tread Depth	Standard RIM	Section Width	Overall Diameter	Pressure	SW	Labeling	Rim Protection
					mm	inch	mm	mm	kPa			
12	145R12C	80/78	P		8	4.00B	145	537	350	BSW	E B 72 2	NO
	145R12C	86/84	P		8	4.00B	145	537	450	BSW	E B 72 2	NO
	155R12C	83/81	P		8	4.50B	157	550	350	BSW	E B 72 2	NO
	155R12C	88/86	P		8	4.50B	157	550	450	BSW	E B 72 2	NO

1inch=25.4mm 1kPa=0.142psi 1KG=2.2 lbs XL Extra Load LI Load Index SS Speed Symbol



Rim	Size	LI	SR	XL	Tread Depth	Standard RIM	Section Width	Overall Diameter	Pressure	SW	Labeling	Rim Protection
					mm	inch	mm	mm	kPa			
13	155R13C	85/83	Q		8	4.50B	157	578	350	BSW	E B 72 2	NO
	165R13C	94/93	S		7.6	4.50B	167	596	450	BSW	E B 72 2	NO
	175R13C	97/95	S		8	5.00B	177	610	450	BSW	E B 72 2	NO
	165/70R13C	88/86	Q		8	5.00B	170	562	375	BSW	E B 72 2	NO
14	175R14C	99/98	Q		9	5J	178	634	450	BSW	E B 72 2	NO
	185R14C	102/100	Q		9	5 1/2J	188	650	450	BSW	C B 72 2	NO
	195R14C	106/104	Q		9	5 1/2J	198	666	450	BSW	C B 72 2	NO
	195R14C	106/104	Q		9	5 1/2J	198	666	450	WR	C B 72 2	NO
	205R14C	109/107	R		9	6J	208	686	450	BSW	C B 72 2	NO
	175/65R14C	90/88	T		8	5J	177	584	375	BSW	E B 72 2	NO
	175/70R14C	95/93	Q		8	5J	177	602	375	BSW	E B 72 2	NO
	205/75R14C	109/107	Q		9	5 1/2J	203	664	475	WR	C B 72 2	NO
15	185R15C	103/102	R		9.4	5 1/2J	188	674	450	BSW	C B 72 2	NO
	195R15C	106/104	R		9	5 1/2J	198	690	450	BSW	C B 72 2	NO
	195R15C	106/104	R		9	5 1/2J	198	690	450	WR	C B 72 2	NO
	215R15C	109/107	R		10	6J	218	725	450	WR	C B 72 2	NO
	205/65R15C	102/100	R		9	6J	209	647	375	BSW	TBD	NO
	195/70R15C	104/102	R		10	6J	201	655	450	BSW	C B 72 2	NO
	205/70R15C	106/104	R		9	6J	209	669	450	BSW	C B 72 2	NO
	215/70R15C	109/107	S		10	6 1/2J	221	683	450	BSW	C B 72 2	NO
	225/70R15C	112/110	R		9	6 1/2J	228	697	450	BSW	C B 72 2	NO

Rim	Size	LI	SR	XL	Tread Depth	Standard RIM	Section Width	Overall Diameter	Pressure	SW	Labeling	Rim Protection
					mm	inch	mm	mm	kPa			
16	175R16C	101/99	R		9	5J	178	684	450	BSW	E B 72 2	NO
	205R16C	110/108	R		9	6J	208	736	450	BSW	C B 72 2	NO
	195/60R16C	99/97	T		9	6J	201	640	375	BSW	C B 72 2	NO
	215/60R16C	103/101	T		9	6 1/2J	221	664	375	BSW	C B 72 2	NO
	195/65R16C	104/102	R		9.4	6J	201	660	475	BSW	C B 72 2	NO
	205/65R16C	107/105	R		9	6J	209	672	475	BSW	C B 72 2	NO
	215/65R16C	109/107	R		9	6 1/2J	221	686	475	BSW	C B 72 2	NO
	225/65R16C	112/110	R		9	6 1/2J	228	698	475	BSW	C B 72 2	NO
	235/65R16C	115/113	R		9	7J	240	712	475	BSW	C B 72 2	NO
	235/65R16C	121/119	R		9	7J	240	712	575	BSW	C B 72 2	NO
	285/65R16C	125	R		9	8 1/2J	292	776	475	BSW	TBD	NO
	285/65R16C	128	R		9	8 1/2J	292	776	525	BSW	TBD	NO
	215/70R16C	108/106	Q		9	6 1/2J	221	708	375	BSW	TBD	NO
	185/75R16C	104/102	R		9	5J	184	684	475	BSW	C B 72 2	NO
	195/75R16C	107/105	R		10	5 1/2J	196	698	475	BSW	C B 72 2	NO
	205/75R16C	110/108	R		9	5 1/2J	203	714	475	BSW	C B 72 2	NO
215/75R16C	116/114	R		10.5	6J	216	728	525	BSW	C B 72 2	NO	
225/75R16C	121/120	R		9	6J	223	744	575	BSW	C B 72 2	NO	
17	225/70R17C	112/110	R		9	6 1/2J	228	748	375	BSW	TBD	NO

1inch=25.4mm	1kPa=0.142psi	1KG=2.2 lbs	WR White Ring	LI Load Index	SS Speed Symbol
			BSW Black Sidewall		

RXFROST

WH01

WINTER-HP-STUDLESS



Rim	Size	LI	SR	XL	Tread Depth	Standard RIM	Section Width	Overall Diameter	Pressure	SW	Labeling	Rim Protection	
					mm	inch	mm	mm	kPa				
13	155/65R13	73	T		8.5	4.50B	157	532	300	BSW	F E 71 2	NO	
	155/70R13	75	T		8.5	4.50B	157	548	300	BSW	F E 71 2	NO	
	165/70R13	79	T		8.5	5.00B	170	562	300	BSW	F E 71 2	NO	
	165/70R13	83	T	XL	8.5	5.00B	170	562	340	BSW	F E 71 2	NO	
	175/70R13	82	T		8.5	5.00B	177	576	300	BSW	E E 71 2	NO	
14	185/60R14	82	T		8.5	5 1/2J	189	578	300	BSW	F E 71 2	NO	
	185/60R14	82	H		8.5	5 1/2J	189	578	300	BSW	F E 71 2	NO	
	195/60R14	86	T		8.5	6J	201	590	300	BSW	E C 71 2	NO	
	165/65R14	79	T		8.5	5J	170	570	300	BSW	F E 71 2	NO	
	175/65R14	82	H		8.7	5J	177	584	300	BSW	F E 71 2	NO	
	175/65R14	86	T	XL	8.7	5J	177	584	340	BSW	E E 71 2	NO	
	185/65R14	86	T		8.7	5 1/2J	189	596	300	BSW	E E 71 2	NO	
	185/65R14	86	H		8.7	5 1/2J	189	596	300	BSW	E E 71 2	NO	
	165/70R14	81	T		8.5	5J	170	588	300	BSW	F E 71 2	NO	
	165/70R14	85	T	XL	8.5	5J	170	588	340	BSW	E E 71 2	NO	
	175/70R14	84	T		8.5	5J	177	602	300	BSW	E E 71 2	NO	
	175/70R14	88	T	XL	8.2	5J	177	602	340	BSW	E E 71 2	NO	
	185/70R14	92	T	XL	8.7	5 1/2J	189	616	340	BSW	E E 71 2	NO	
	185/70R14	88	H		8.7	5 1/2J	189	616	300	BSW	E E 71 2	NO	
	195/70R14	91	H		8.7	6J	201	630	300	BSW	E C 71 2	NO	
	195/70R14	95	T	XL	8.7	6J	201	630	340	BSW	E C 71 2	NO	
	205/70R14	98	T	XL	8.7	6J	209	644	340	BSW	E C 71 2	NO	
	205/70R14	98	H	XL	8.7	6J	209	644	300	BSW	E C 71 2	NO	
	15	195/50R15	86	H	XL	8.5	6J	201	577	340	BSW	E C 71 2	YES
		195/50R15	86	V	XL	8.5	6J	201	577	340	BSW	E C 71 2	YES
185/55R15		86	H	XL	8.5	6J	194	585	340	BSW	E E 71 2	NO	
195/55R15		85	H		8.5	6J	201	595	300	BSW	E C 71 2	YES	
185/60R15		88	H	XL	8.5	5 1/2J	189	603	340	BSW	E E 71 2	NO	
185/60R15		88	T	XL	8.5	5 1/2J	189	603	340	BSW	E E 71 2	NO	
185/60R15		84	H		8.5	5 1/2J	189	603	300	BSW	E E 71 2	NO	
195/60R15		88	T		8.5	6J	201	615	300	BSW	E C 71 2	YES	
195/60R15		88	H		8.5	6J	201	615	300	BSW	E C 71 2	YES	
205/60R15		91	H		8.7	6J	209	627	300	BSW	E C 71 2	YES	
175/65R15		84	H		8.7	5J	177	609	300	BSW	E E 71 2	NO	
175/65R15		88	H	XL	8.7	5J	177	609	340	BSW	E E 71 2	NO	
185/65R15		88	T		8.7	5 1/2J	189	621	300	BSW	E E 71 2	NO	
185/65R15		92	T	XL	8.7	5 1/2J	189	621	340	BSW	E E 71 2	NO	
185/65R15		88	H		8.7	5 1/2J	189	621	300	BSW	E E 71 2	NO	
16	185/65R15	92	H	XL	8.7	5 1/2J	189	621	340	BSW	E E 71 2	NO	
	195/65R15	91	T		8.7	6J	201	635	300	BSW	E C 71 2	NO	
	195/65R15	95	T	XL	8.7	6J	201	635	340	BSW	E C 71 2	NO	
	195/65R15	91	H		8.7	6J	201	635	300	BSW	E C 71 2	NO	
	205/65R15	94	H		8.5	6J	209	647	300	BSW	E C 71 2	NO	
	215/65R15	96	H		8.5	6 1/2J	221	661	300	BSW	E C 72 2	YES	
	195/45R16	84	H	XL	8.5	6 1/2J	195	582	340	BSW	E C 72 2	YES	
	205/45R16	87	H	XL	8.7	7J	206	590	340	BSW	F C 72 2	YES	
	205/45R16	87	V	XL	8.7	7J	206	590	340	BSW	F C 72 2	YES	

1inch=25.4mm | 1kPa=0.142psi | 1KG=2.2 lbs | XL Extra Load | LI Load Index | SS Speed Symbol

SUMMER

WINTER

ALL WEATHER

STRONG GRIP AND EXCELLENT HANDLING ON SNOW AND ICE

SPECIAL RUBBER COMPOUND AND NUMEROUS SIPES HELP MAINTAIN TREAD SOFTNESS

SPECIAL TREAD COMPOUND

Special silica tread formula helps the tire remain soft in low temperatures for stable driving and braking capabilities.

FUEL EFFICIENT

The special tread compound reduces rolling resistance for better fuel efficiency.

Tread Pattern

A reinforced center rib improves handling and high speed performance while the multiple sipes enhance grip and braking capabilities on snow and ice.

Safety

Zigzagged grooves improve the tire's self-cleaning capabilities for a safer drive on snow and ice.

Rim	Size	LI	SR	XL	Tread Depth	Standard RIM	Section Width	Overall Diameter	Pressure	SW	Labeling	Rim Protection
					mm	inch	mm	mm	kPa			
	205/50R16	87	H		8.7	6 1/2J	214	612	300	BSW	E C 71 2	YES
	195/55R16	87	H		8.5	6J	201	620	300	BSW	E C 71 2	YES
	195/55R16	87	V		8.5	6J	201	620	300	BSW	E C 71 2	YES
	205/55R16	91	H		8.5	6 1/2J	214	632	300	BSW	E C 71 2	YES
	205/55R16	94	H	XL	8.5	6 1/2J	214	632	340	BSW	E C 71 2	YES
	205/55R16	94	V	XL	8.5	6 1/2J	214	632	340	BSW	E C 71 2	YES
	215/55R16	97	H	XL	8.7	7J	226	642	340	BSW	E C 72 2	YES
	215/55R16	97	V	XL	8.7	7J	226	642	340	BSW	E C 72 2	YES
	225/55R16	99	H	XL	8.7	7J	233	654	340	BSW	E C 72 2	YES
	205/60R16	96	H	XL	8.7	6J	209	652	340	BSW	E C 71 2	YES
	215/60R16	99	H	XL	8.7	6 1/2J	221	664	340	BSW	E C 72 2	NO
	225/60R16	98	H		8.7	6 1/2J	228	676	300	BSW	E C 72 2	YES
	205/65R16	95	H		8.8	6J	209	672	300	BSW	E C 71 2	YES
	215/65R16	98	H		8.8	6 1/2J	221	686	300	BSW	E C 72 2	NO
	245/70R16	107	T		8.7	7J	248	750	300	BSW	TBD	NO

RXFROST

WU01

WINTER-UHP-STUDLESS



Winter tread formulation for excellent driving performance on ice and snow. Wider tread increases road contact for greater safety.



■ **Safety**

The tread is able to maintain softness in low temperatures to ensure passenger safety while serrated sipes improve tire grip on ice and snow.

■ **Braking**

The tire pattern's deep and densely distributed grooves enhance braking capabilities.

■ **Handling**

The three main pattern grooves provide great handling in extreme winter weather conditions by draining snow and ice.

■ **Groove Design**

The serrated design on the sides of the main grooves help the tire better grip on ice and snow.



Rim	Size	LI	SR	XL	Tread Depth	Standard RIM	Section Width	Overall Diameter	Pressure	SW	Labeling	Rim Protection	
					mm	inch	mm	mm	kPa				
14	185/60R14	82	T		9.2	5 1/2J	189	578	300	BSW	E C 71 2	YES	
15	195/65R15	95	T	XL	9.2	6J	201	635	340	BSW	E C 72 2	YES	
	205/65R15	94	H		9.2	6J	209	647	300	BSW	E C 72 2	YES	
16	205/55R16	91	H		9.5	6 1/2J	214	632	300	BSW	E C 72 2	YES	
	215/55R16	97	H	XL	9.5	7J	226	642	340	BSW	E C 72 2	YES	
	225/55R16	99	H	XL	9.5	7J	233	654	340	BSW	E C 72 2	YES	
	215/60R16	99	H	XL	9.5	6 1/2J	221	664	340	BSW	E C 72 2	YES	
	225/60R16	98	H		9.5	6 1/2J	228	676	300	BSW	C C 72 2	YES	
17	215/65R16	98	H		9.5	6 1/2J	221	686	300	BSW	E C 72 2	YES	
	205/45R17	88	H	XL	9.5	7J	206	616	340	BSW	E C 72 2	YES	
	205/45R17	88	V	XL	9.5	7J	206	616	340	BSW	E C 72 2	YES	
	215/45R17	87	H		9.5	7J	213	626	300	BSW	E C 72 2	YES	
	215/45R17	87	V		9.5	7J	213	626	300	BSW	E C 72 2	YES	
	225/45R17	91	H		9.5	7 1/2J	225	634	300	BSW	E C 72 2	YES	
	225/45R17	91	V		9.5	7 1/2J	225	634	300	BSW	E C 72 2	YES	
	235/45R17	94	H		9.5	8J	236	644	300	BSW	E C 72 2	YES	
	235/45R17	94	V		9.5	8J	236	644	300	BSW	E C 72 2	YES	
	205/50R17	89	H		9.5	6 1/2J	214	638	300	BSW	E C 72 2	YES	
	205/50R17	89	V		9.5	6 1/2J	214	638	300	BSW	E C 72 2	YES	
	17	225/50R17	98	H	XL	9.5	7J	233	658	340	BSW	E C 72 2	YES
		225/50R17	98	V	XL	9.5	7J	233	658	340	BSW	E C 72 2	YES
		205/55R17	95	H	XL	9.5	6 1/2J	214	658	340	BSW	E C 72 2	YES
		215/55R17	94	H		9.5	7J	226	668	300	BSW	E C 72 2	YES
		215/55R17	94	V		9.5	7J	226	668	300	BSW	E C 72 2	YES
		225/55R17	97	H		9.5	7J	233	680	300	BSW	E C 72 2	YES
225/55R17		97	V		9.5	7J	233	680	300	BSW	E C 72 2	YES	
235/55R17		99	H		9.5	7 1/2J	245	690	300	BSW	E C 72 2	YES	
225/65R17		102	S		9.5	6 1/2J	228	724	300	BSW	E C 72 2	YES	
225/65R17		102	T		9.5	6 1/2J	228	724	300	BSW	E C 72 2	YES	
235/65R17		104	S		9.5	7J	240	738	300	BSW	E C 72 2	YES	
18	265/65R17	112	S		9.5	8J	272	776	300	BSW	C C 72 2	YES	
	225/40R18	92	H	XL	9.5	8J	230	637	340	BSW	E C 72 2	YES	
	235/40R18	95	V	XL	8.8	8 1/2J	241	645	340	BSW	E C 72 2	YES	
	245/40R18	97	H	XL	9.5	8 1/2J	248	653	340	BSW	E C 72 2	YES	
	235/45R18	98	H	XL	9.5	8J	236	669	340	BSW	E C 72 2	YES	
	245/45R18	100	H	XL	9.5	8J	243	677	340	BSW	E C 72 2	YES	
	215/55R18	99	H	XL	9.5	7J	226	693	340	BSW	E C 72 2	YES	
	235/55R18	104	H	XL	9.5	7 1/2J	245	715	340	BSW	E C 72 2	YES	
19	255/55R18	109	H	XL	9.5	8J	265	737	340	BSW	C C 72 2	YES	
	255/35R19	96	H	XL	9.5	9J	260	661	340	BSW	E C 72 2	YES	
	275/35R19	100	H	XL	9.5	9 1/2J	278	675	340	BSW	TBD	YES	
	225/40R19	93	V	XL	8.8	8J	230	663	340	BSW	E C 72 2	YES	
	245/40R19	98	H	XL	9.5	8 1/2J	248	679	340	BSW	E C 72 2	YES	
	255/40R19	100	V	XL	8.8	9J	260	687	340	BSW	E C 72 2	YES	
	255/50R19	107	H	XL	9.5	8J	265	739	340	BSW	C C 72 2	YES	
20	245/55R19	103	V		9.5	7 1/2J	253	753	300	BSW	TBD	YES	
	245/55R19	103	H		9.5	7 1/2J	253	753	300	BSW	E C 72 2	YES	
	275/40R20	106	V	XL	8.8	9 1/2J	278	728	340	BSW	TBD	YES	
	275/45R20	110	V	XL	8.8	9J	273	756	340	BSW	TBD	YES	
21	295/35R21	107	V	XL	8.8	10 1/2J	301	739	340	BSW	TBD	YES	

1inch=25.4mm | 1kPa=0.142psi | 1KG=2.2 lbs | XL Extra Load | LI Load Index | SS Speed Symbol

RXFROST

WH02

WINTER-HP-STUDDABLE



The newly developed WH02 is a studdable winter tire for your car or SUV. The trinity pattern design is constructed and made up of a compound that enhances driving safety and performance in extreme winter weather conditions.



■ Safety

The tread compound helps the tire maintain softness in low temperatures to improve driving safety.

■ Tread Pattern

The varied arrangement of studs, grooves, and sipes improve grip on ice and snow.

■ Braking

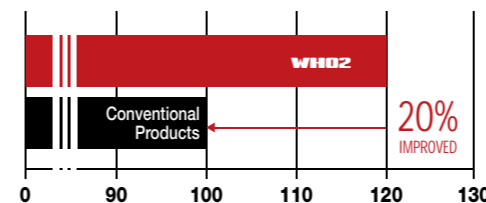
The tread pattern utilizes four main grooves which aid in effectively discharging ice and snow out of the tire. Each groove has a jagged design which allows for superior braking power on both ice and snow.



Widened Driving Surface and Improved Crown Arc

The larger contact area provides a more stable ride and improves skidding resistance which increases overall driving safety.

Tire Anti-Skid Capabilities



Skidding Resistance ■

Driving safety is increased on ice and snow due to the right-angle design of the shoulder which improves skidding resistance.

Stability ■

Added 3D design in the shoulder increases the tire's grip when in deep snow and improves traction performance and ground stability.



Rim	Size	LI	SR	XL	Tread Depth	Standard RIM	Section Width	Overall Diameter	Pressure	SW	Labeling	Rim Protection
					mm	inch	mm	mm	kPa			
13	175/70R13	82	T		9.9	5.00B	177	576	300	BSW	F F 71 2	NO
14	175/65R14	82	H		9.9	5J	177	584	300	BSW	F F 71 2	NO
	185/65R14	86	T		9.9	5 1/2J	189	596	300	BSW	F F 71 2	NO
	175/70R14	88	T	XL	9.9	5J	177	602	340	BSW	F F 71 2	NO
	185/70R14	92	T	XL	9.9	5 1/2J	189	616	340	BSW	F F 71 2	NO
15	195/60R15	88	T		9.9	6J	201	615	300	BSW	F F 72 2	NO
	185/65R15	88	T		9.9	5 1/2J	189	621	300	BSW	F F 71 2	NO
	195/65R15	91	T		9.9	6J	201	635	300	BSW	F F 72 2	NO
	205/65R15	94	H		9.9	6J	209	647	300	BSW	F F 72 2	NO
	205/70R15	96	T		9.9	6J	209	669	300	BSW	F F 72 2	NO
16	205/55R16	91	H		9.9	6 1/2J	214	632	300	BSW	F F 72 2	YES
	205/60R16	96	H	XL	9.9	6J	209	652	340	BSW	F F 72 2	NO
	215/60R16	99	H	XL	9.9	6 1/2J	221	664	340	BSW	E F 72 2	NO
	215/65R16	98	H		9.9	6 1/2J	221	686	300	BSW	E F 72 2	NO
	215/70R16	100	S		9.9	6 1/2J	221	708	300	BSW	E F 72 2	NO
17	215/50R17	91	T		9.9	7J	226	648	300	BSW	F F 72 2	YES
	215/60R17	96	S		9.9	6 1/2J	221	690	300	BSW	F F 72 2	NO
	225/65R17	102	S		9.9	6 1/2J	228	724	300	BSW	E F 72 2	NO
	235/65R17	104	S		9.9	7J	240	738	300	BSW	E F 72 2	NO
	265/65R17	112	S		9.9	8J	272	776	300	BSW	E F 73 2	NO

STUD SIZE TSMI#12

1inch=25.4mm	1kPa=0.142psi	1KG=2.2 lbs	XL Extra Load	LI Load Index	SS Speed Symbol
--------------	---------------	-------------	---------------	---------------	-----------------

RXFROST

WH03

WINTER-HP-STUDLESS



New sipe design elements greatly improve traction, handling, and stability for improved driving safety.



■ **Handling**

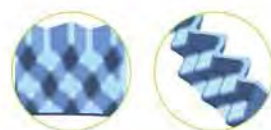
Tiny horizontal grooves absorb and store water that is dispersed on the surface of ice for better grip. The sipe design improves the tire's rigidity to reduce tire deformation, improve stability, and offer a more comfortable ride.

■ **Safety**

The groove design effectively discharges snow and mud for a safer ride.

■ **Grip**

The large block design and small grooves increase grip for more efficient traction and braking on ice.



Triple 3-D groove

■ **Skidding Resistance**

The 90 degree angled shoulder improves anti-skid performance to dramatically increase driving safety on ice and snow.

■ **Stability**

The J-like 3-D shoulder design provides better grip and stability.



Rim	Size	LI	SR	XL	Tread Depth	Standard RIM	Section Width	Overall Diameter	Pressure	SW	Labeling	Rim Protection
					mm	inch	mm	mm	kPa			
13	155/65R13	73	T		8.5	4.50B	157	532	300	BSW	F C 70 2	NO
	155/70R13	75	T		8.5	4.50B	157	548	300	BSW	F C 70 2	NO
	165/70R13	83	T	XL	8.5	5.00B	170	562	340	BSW	E C 70 2	NO
	175/70R13	82	T		8.5	5.00B	177	576	300	BSW	E C 70 2	NO
14	185/60R14	82	T		8.5	5 1/2J	189	578	300	BSW	E C 70 2	NO
	195/60R14	86	T		8.5	6J	201	590	300	BSW	E C 70 2	NO
	175/65R14	82	H		8.5	5J	177	584	300	BSW	E C 70 2	NO
	185/65R14	86	T		8.5	5 1/2J	189	596	300	BSW	E C 70 2	NO
	195/65R14	89	T		8.5	6J	201	610	300	BSW	E C 70 2	NO
	165/70R14	85	T	XL	8.5	5J	170	588	340	BSW	E C 70 2	NO
	175/70R14	88	T	XL	8.5	5J	177	602	340	BSW	E C 70 2	NO
	185/70R14	88	H		8.5	5 1/2J	189	616	300	BSW	E C 70 2	NO
	195/70R14	91	H		8.5	6J	201	630	300	BSW	E C 70 2	NO
	205/70R14	98	H	XL	8.5	6J	209	644	340	BSW	E C 70 2	NO
15	185/55R15	86	H	XL	8.5	6J	194	585	340	BSW	E C 70 2	YES
	195/55R15	85	H		8.5	6J	201	595	300	BSW	E C 70 2	YES
	185/60R15	88	H	XL	8.5	5 1/2J	189	603	340	BSW	E C 70 2	NO
	195/60R15	88	T		8.5	6J	201	615	300	BSW	E C 70 2	NO
	185/65R15	88	T		8.5	5 1/2J	189	621	300	BSW	E C 70 2	NO
	195/65R15	91	T		8.5	6J	201	635	300	BSW	E C 70 2	NO
	205/65R15	94	H		8.5	6J	209	647	300	BSW	E C 70 2	NO
	215/65R15	96	H		8.5	6 1/2J	221	661	300	BSW	E C 70 2	NO
	205/70R15	96	T		8.5	6J	209	669	300	BSW	E C 70 2	NO
	215/70R15	98	T		8.5	6 1/2J	221	683	300	BSW	E C 70 2	NO
16	215/75R15	100	S		10.5	6J	216	703	300	BSW	E C 70 2	NO
	235/75R15	109	S	XL	10.5	6 1/2J	235	733	340	BSW	E C 70 2	NO
	205/55R16	91	H		8.5	6 1/2J	214	632	300	BSW	E C 70 2	NO
	205/60R16	96	H	XL	8.5	6J	209	652	340	BSW	E C 70 2	NO
	215/60R16	99	H	XL	8.5	6 1/2J	221	664	340	BSW	E C 70 2	NO
	215/65R16	98	H		8.5	6 1/2J	221	686	300	BSW	E C 70 2	NO
	235/45R17	94	H		8.5	8J	236	644	300	BSW	E C 70 2	NO
17	215/55R17	94	H		8.5	7J	226	668	300	BSW	E C 70 2	YES
	235/60R18	107	T	XL	10.5	7J	240	739	340	BSW	E C 70 2	NO

1inch=25.4mm | 1kPa=0.142psi | 1KG=2.2 lbs | XL Extra Load | LI Load Index | SS Speed Symbol

RXFROST

WC01

WINTER-LTC-STUDLESS



A winter tire product specifically designed for commercial light trucks.



■ **Handling**

The wide and jagged groove design efficiently drains snow and water out of the tire to improve handling in winter weather.

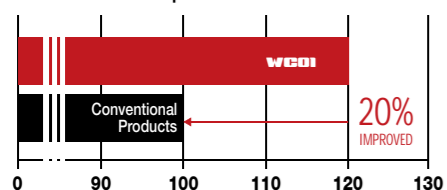
■ **Tread Design**

The intersecting blocks, grooves, and sipes allow for more effective braking on ice and snow.

■ **Grip**

The precision cut sipes enhance grip on ice and snow to allow for a safer driving experience.

Tire Anti-Skid Capabilities



A mixture of compounds ensure the tire is prepared for any winter weather conditions.

■ **Comfortable Drive**

The tread width and block patterns ensure a secure contact with the road surface to improve driving comfort.



Rim	Size	LI	SR	XL	Tread Depth	Standard RIM	Section Width	Overall Diameter	Pressure	SW	Labeling	Rim Protection
					mm	inch	mm	mm	kPa			
12	155R12C	88/86	R		8.7	4.50B	157	550	450	BSW	TBD	NO
13	155R13C	85/83	R		8.7	4.50B	157	578	350	BSW	TBD	NO
14	185R14C	102/100	R		9.6	5 1/2J	188	650	450	BSW	E E 71 2	NO
	195R14C	106/104	R		10	5 1/2J	198	666	450	BSW	E E 71 2	NO
15	195R15C	106/104	R		10	5 1/2J	198	690	450	BSW	E E 71 2	NO
	195/70R15C	104/102	S		10	6J	201	655	450	BSW	E E 71 2	NO
	205/70R15C	106/104	S		10	6J	209	669	450	BSW	C E 71 2	NO
	215/70R15C	113/111	S		10	6 1/2J	221	683	525	BSW	C E 71 2	NO
	225/70R15C	112/110	S		10	6 1/2J	228	697	450	BSW	C E 71 2	NO
16	195/60R16C	99/97	T		10.2	6J	201	640	375	BSW	C E 71 2	NO
	215/60R16C	108/106	T		10	6 1/2J	221	664	475	BSW	E E 71 2	NO
	195/65R16C	104/102	T		10	6J	201	660	475	BSW	C E 71 2	NO
	205/65R16C	107/105	T		10	6J	209	672	475	BSW	E E 71 2	NO
	215/65R16C	109/107	T		10	6 1/2J	221	686	475	BSW	E E 71 2	NO
	225/65R16C	112/110	T		10	6 1/2J	228	698	475	BSW	C E 71 2	NO
	235/65R16C	115/113	R		10.2	7J	240	712	475	BSW	C E 71 2	NO
	285/65R16C	128	N		10.2	8 1/2J	292	776	525	BSW	TBD	NO
	185/75R16C	104/102	R		9.6	5J	184	684	475	BSW	E E 71 2	NO
	195/75R16C	107/105	R		10	5 1/2J	196	698	475	BSW	C E 71 2	NO
205/75R16C	113/111	R		10	5 1/2J	203	714	525	BSW	C E 71 2	NO	
215/75R16C	116/114	R		10	6J	216	728	525	BSW	C E 71 2	NO	
225/75R16C	118/116	R		10	6J	223	744	525	BSW	C E 71 2	NO	

1inch=25.4mm | 1kPa=0.142psi | 1KG=2.2 lbs | XL Extra Load | LI Load Index | SS Speed Symbol

Tire Basics

1. Increased Wear Resistance

Radial tires employ heavy-duty steel wires which, when coupled with even ground contact, increases wear resistance, provides better braking capability, and is comfortable. The radial tire's wear resistance life increases by 50-130% compared to the bias tire. (Pic 1)

2. Fuel Economy

Radial tires have a soft tire carcass which allows for lower rolling resistance. Running the same number of revolutions as the bias, the traveling distance is longer. With a radial tire there is little rolling resistance which saves about 20-25% of force and fuel consumption is lowered by 6-9%. (Pic 2)

3. Increased Maneuverability and Stability

Excellent grip force which increases maneuverability when turning. Radial tires, at the same rotation angle as the bias tires, have a smaller amount of torque which increasing maneuverability and stability. (Pic 3)

4. Low Heat Buildup and Cut Resistance

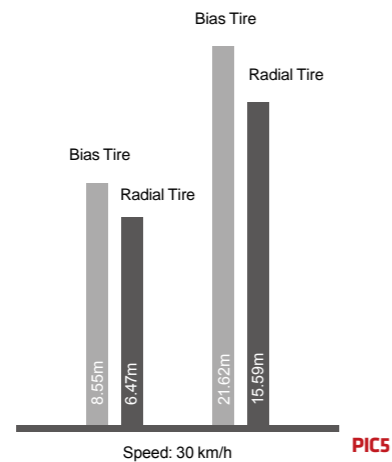
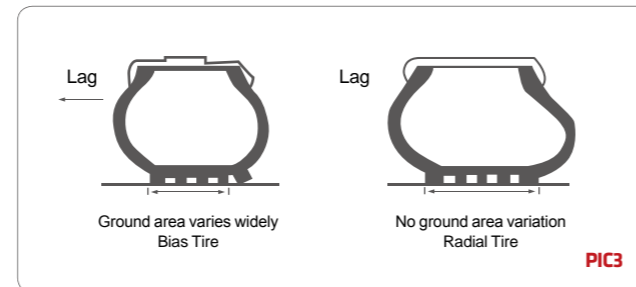
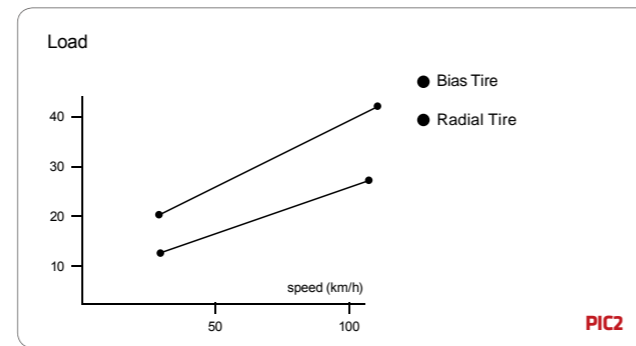
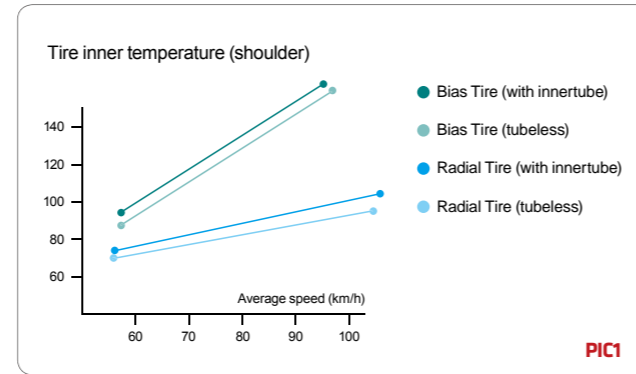
When traveling at 90 km/h, the tire temperature is relative. The carcass uses a metal layer which has great heat dissipation so when driving, the friction on the inside of the tire is low. While moving, the tread doesn't have to work as much which causes over shearing stress on the tire. A radial tire's heat buildup is 25% less than that of bias tire. (Pic 4)

5. Better Braking

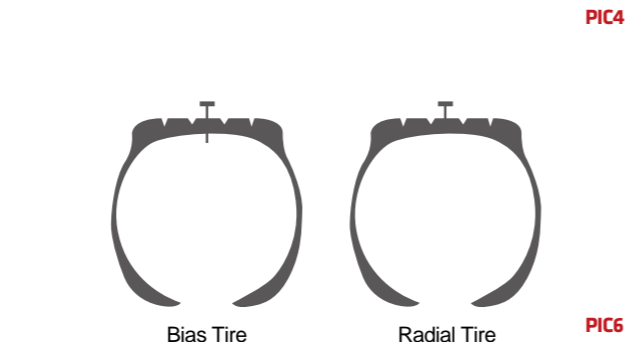
The tire carcass uses a heavy-duty steel wire layer allowing for great braking performance on wet roads. The force of the grip for radial tires is even better, therefore increasing braking efficiency. (Pic 5)

6. Stronger Puncture Resistance

Main reason for adding puncture resistance: rock, glass, nails, and miscellaneous road debris. The radial tire steel tread is strong; the carcass uses a steel wire layer which gives greater protection from these items. (Pic 6)



Item	Radial Tire	Bias Tire
Inner Temperature	63°C	90°C
Shoulder Temperature	80°C	140°C



Tire Basics

UHPT (Ultra High Performance Tire) is the shortened name for the best performance tire. Its aspect ratio is less than 55 and has an inner diameter is 16" or higher.

UHP tire size label



- 1 Normal Section Width
- 2 Normal Aspect Ratio
- 3 Speed Rating
 - V ≤ 240 km/h
 - Z > 240 km/h
 - W ≤ 270 km/h
 - Y ≤ 300 km/h
- 4 Radial Tire
- 5 Normal Rim Diameter
- 6 Load Index
- 7 Speed Rating

What is a UHP Tire ?

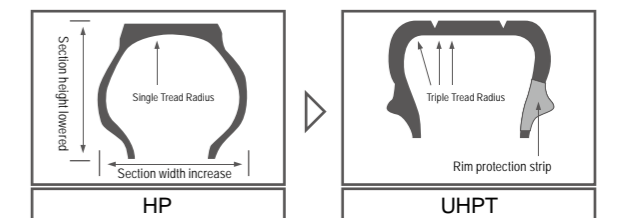
1. Pattern

Innovative tread design which uses a wide pattern block to improve maneuverability and offer stronger grip.



2. Structure

Section width increase: Wider contact area, increased lateral strength
 Section height lowered: Tire Sidewall strength increased
 Rim protection strip: protects the rim, better looking



ROADX